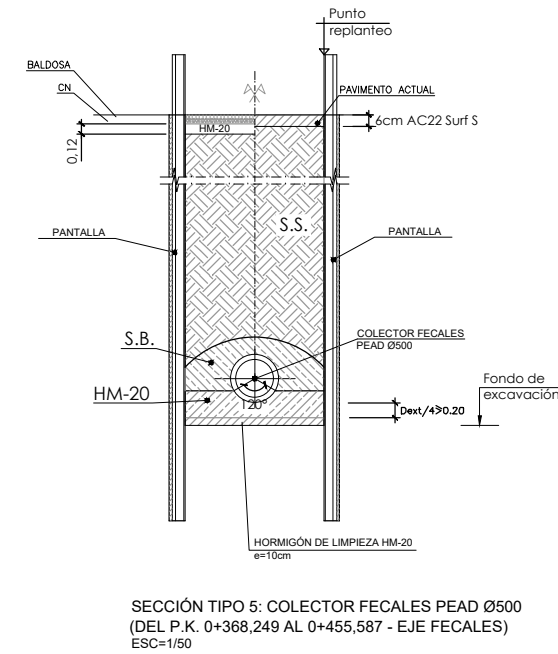
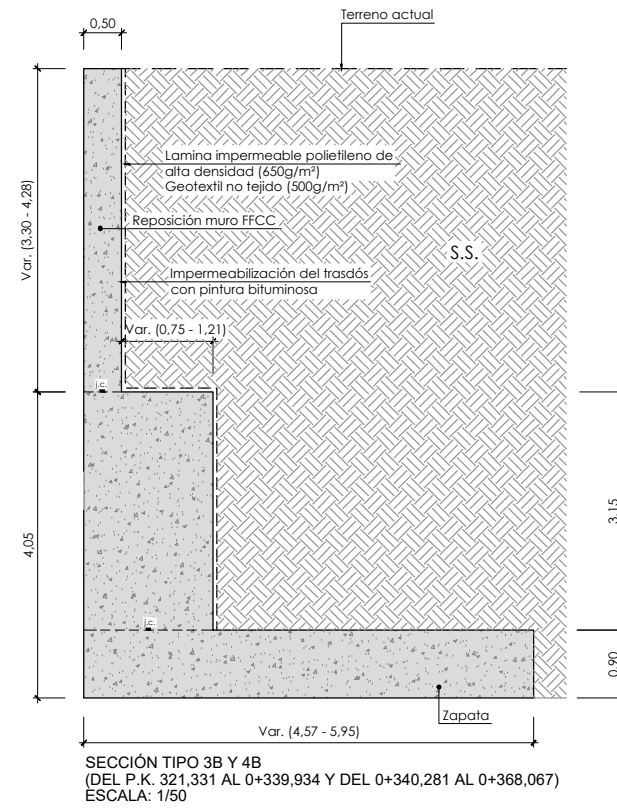
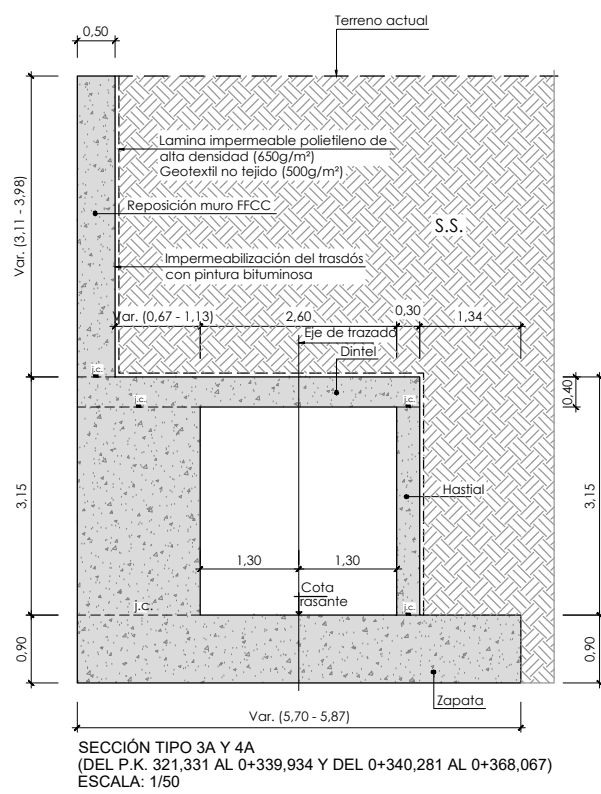
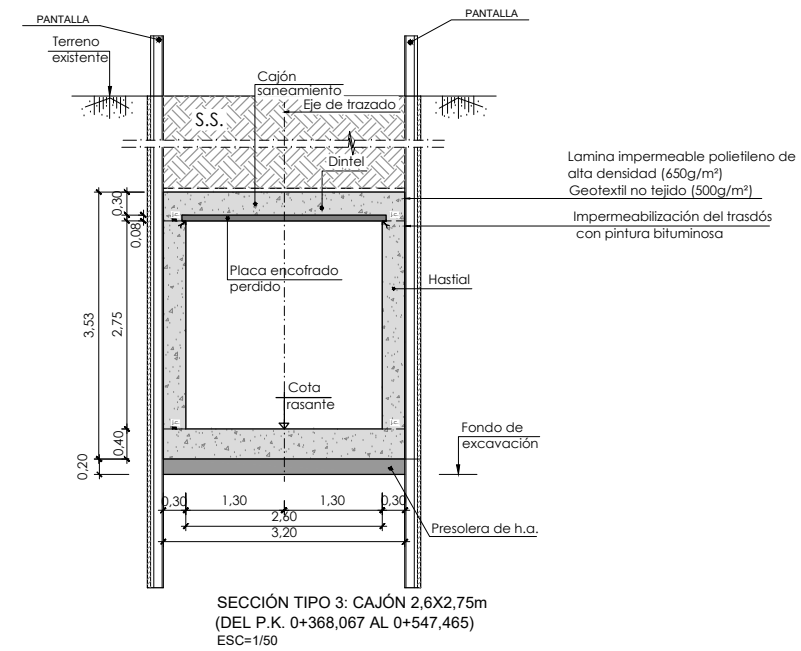
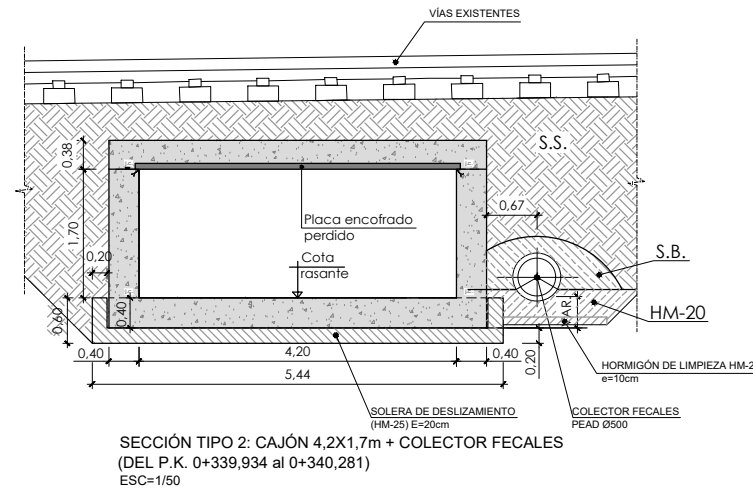
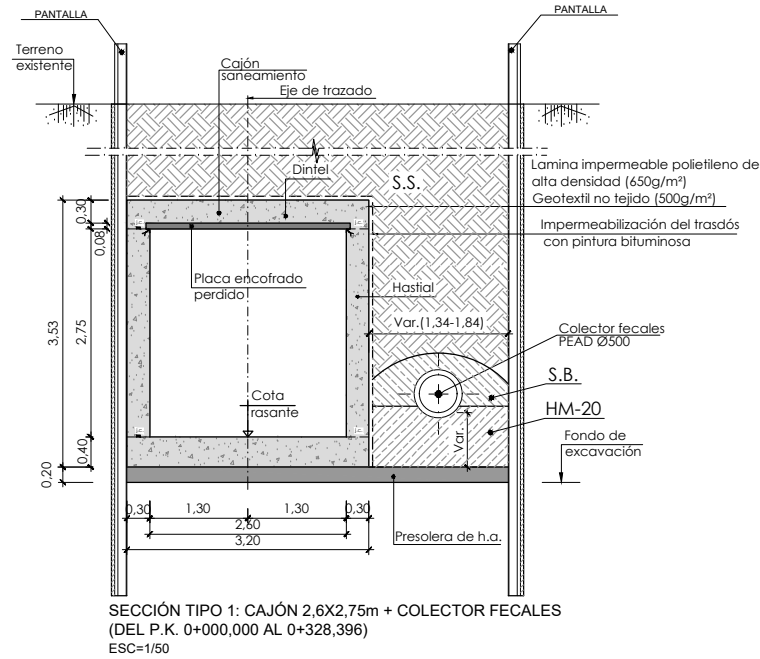


OHARRAK :
NOTAS :

| | |
|-------|---|
| S.S. | Suelo seleccionado compactado al 95% PN |
| S.B. | Subase granular de todo uno de cantera |
| HM-20 | Hormigón en masa |



| | | | | |
|--|-----------------------|-------------------------------------|--------|------------|
| A | PRIMERA EMISION | Mar. 23 | NCF | ETS |
| REV. | CLASE DE MODIFICACION | FECHA | NOMBRE | COMP. OBRA |
| BERRIKUSPENAK / REVISIONES | | | | |
| AHOLKULARIA / CONSULTOR | | INGENIARI EGILEA INGENIERO AUTOR | | |
| AHOLKULARIAREN ERREFERENTZIA REFERENCIA CONSULTOR | | ERREFERENTZIA REFERENCIA | | |
| MDRM-23-007-A | | | | |

P:\PROYECTOS\315052\315000265\02 VICENTINES\PLANOS\PLANOS REGATA\05_SECCIONES TIPO\MDRM-23-007-A.DWG - 06/03/2023