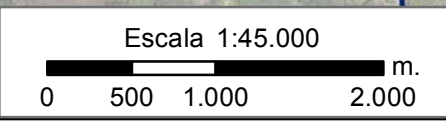


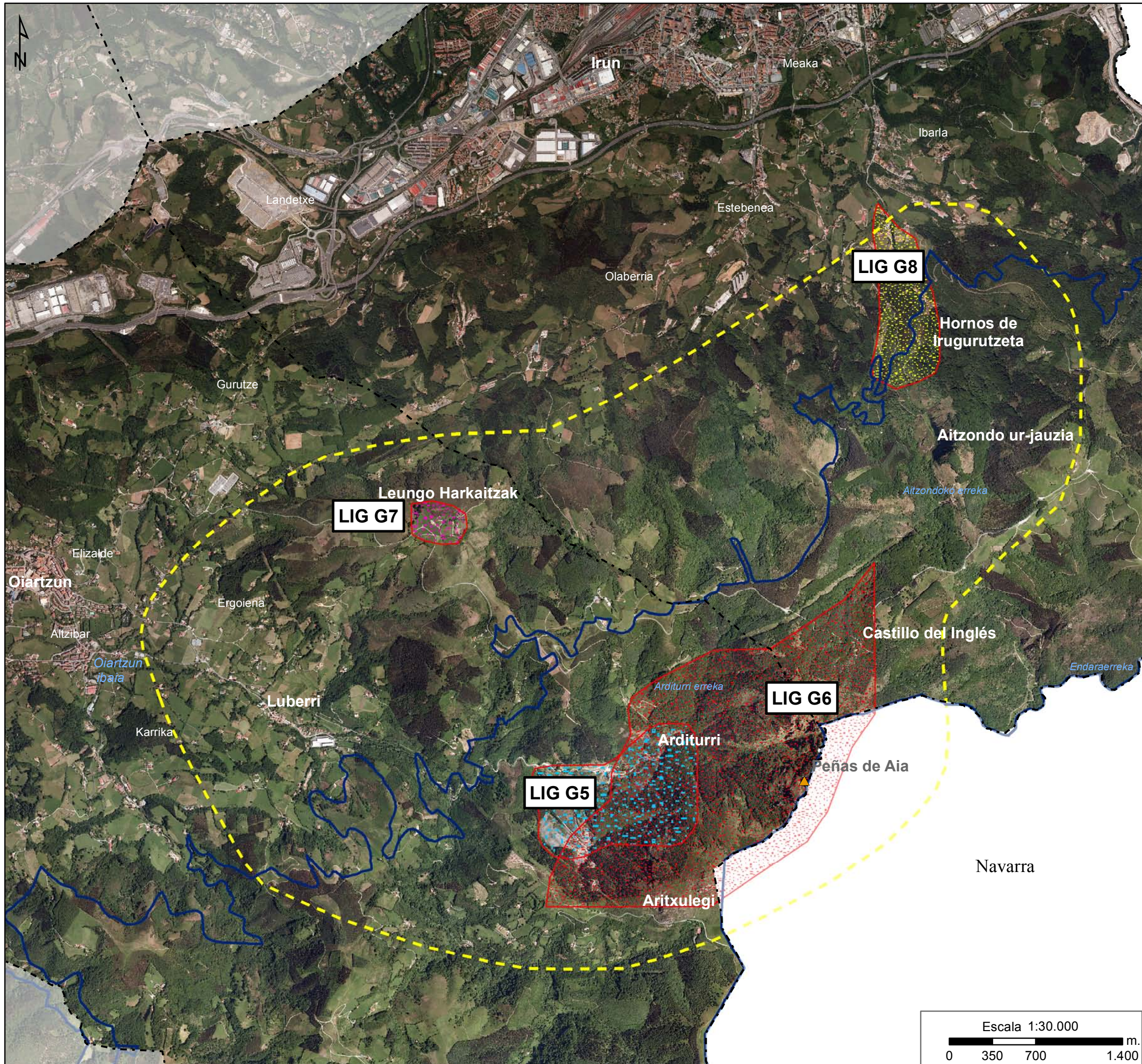
Mar cantábrico









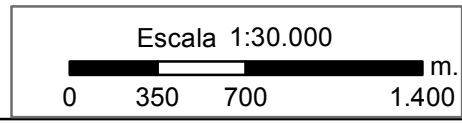
- Red Natura 2000: LIC
- Geozonas
- LIG G1, Turbiditas y calas de Talaia
- LIG G2, Bocana del puerto de Pasajes
- LIG G3, Caprichos de Labetxu
- LIG G4, Faro de la Plata



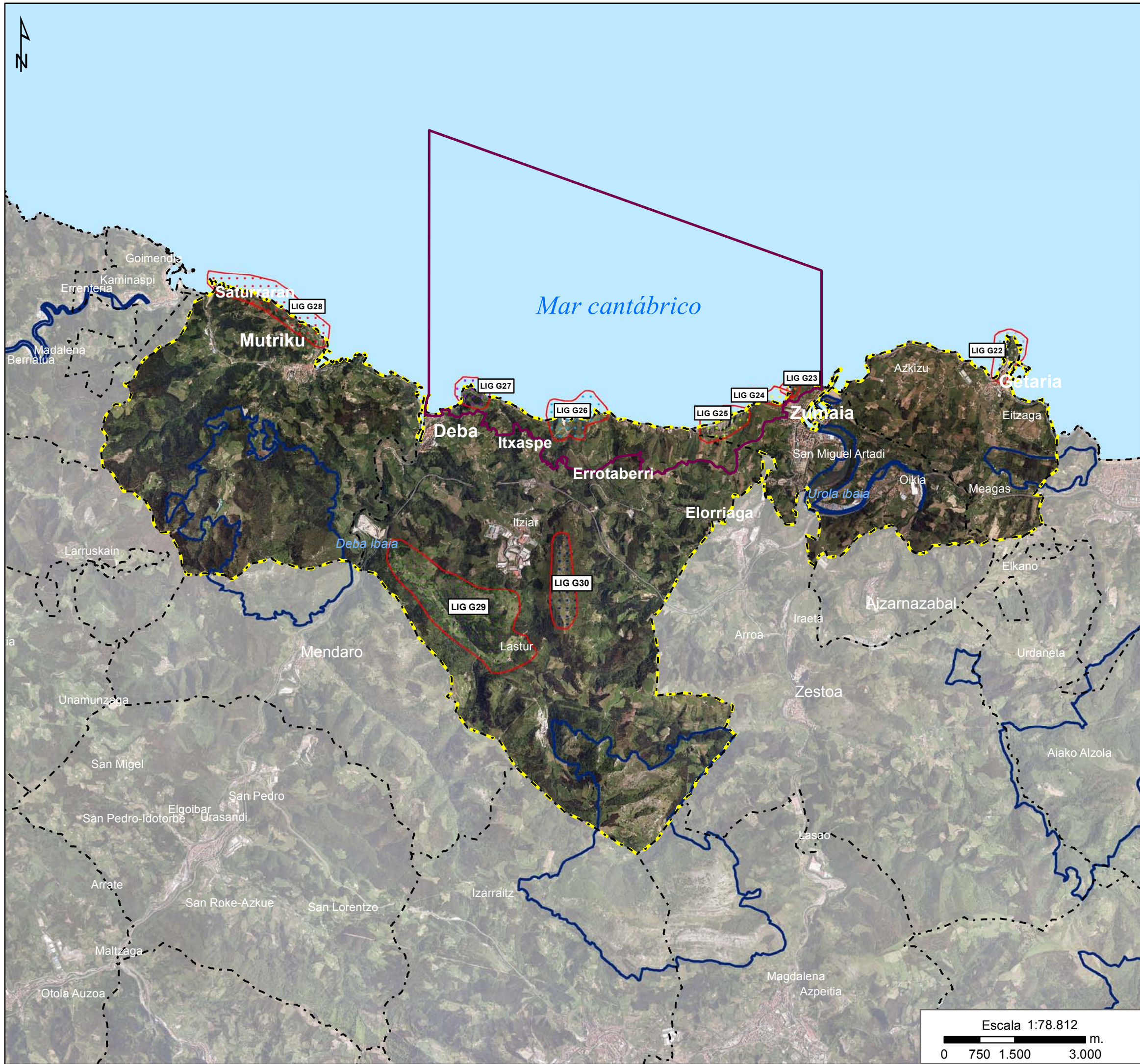
**GEOZONA GZ1- JAIZKIBEL**



-  Límite del Parque Natural de Aiako Harria
-  Geozonas
-  LIG G5, Minas de Arditurri
-  LIG G6, Granito de Aiako Harria
-  LIG G7, Conglomerados del Buntsandstein de Leungo Harkaitzak
-  LIG G8, Valle de Aitzondo

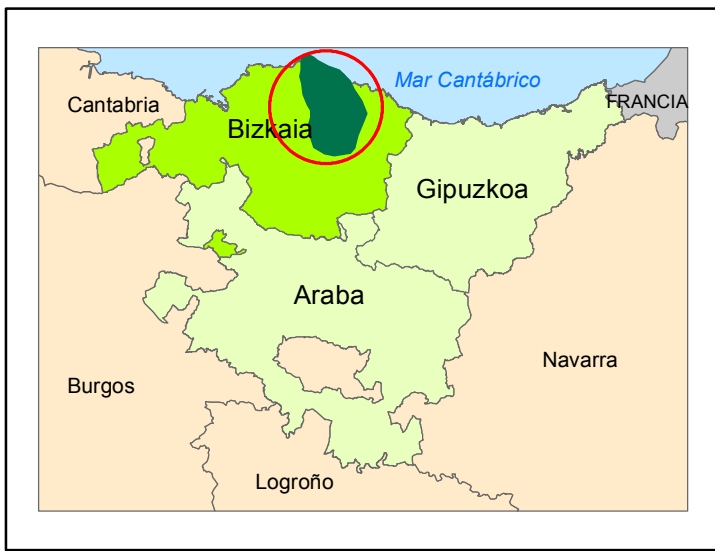


**GEOZONA GZ2-  
AIAKO HARRIA**

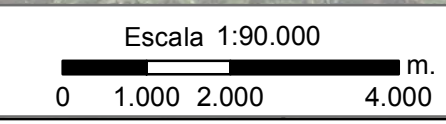


-  Red Natura 2000: LIC
-  Litoral Deba-Zumaia
-  Geozonas
-  LIG G22, Ratón de Getaria
-  LIG G23, Turbiditas de Marianton
-  LIG G24, Paleoceno de Itzurun
-  LIG G25, Acantilados y rasa de Pikote
-  LIG G26, Acantilados y rasa de Sakoneta
-  LIG G27, Pliegues de Aitzandi
-  LIG G28, Flysch negro de 7 playas
-  LIG G29, Valle de Lastur
-  LIG G30, Complejo arrecifal de Andutz

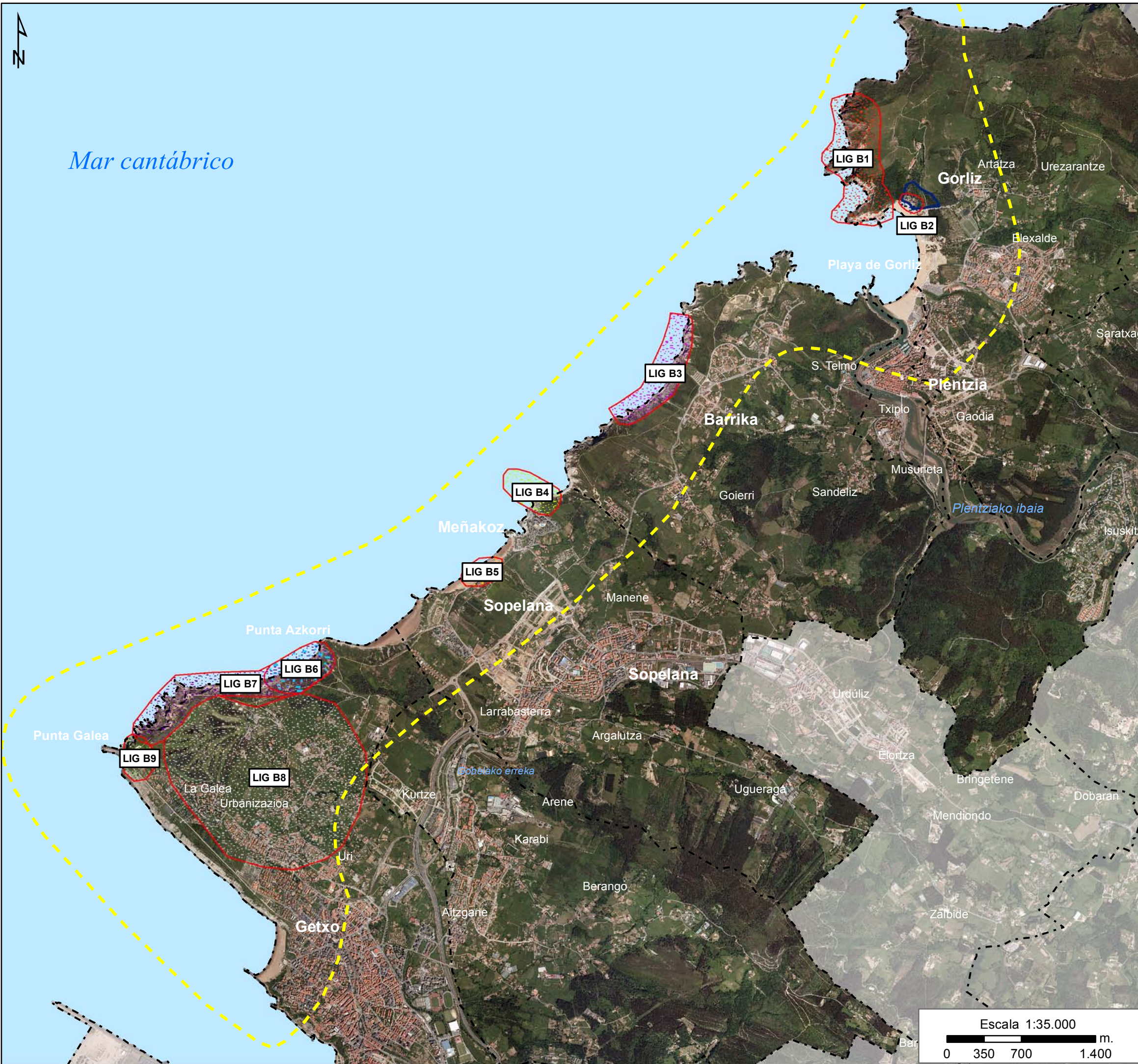
**GEOZONA GZ3-  
GEOPARQUE DE LA  
COSTA VASCA**



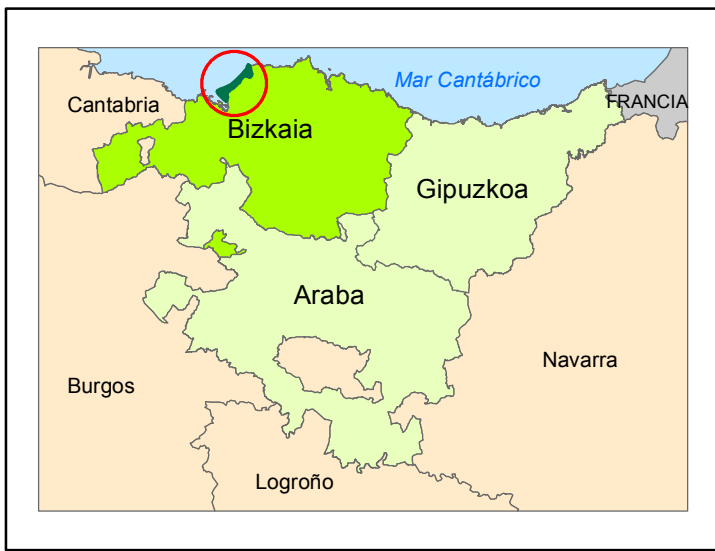
- Límite de la Reserva de la Biosfera
- Límite municipal
- Geozonas
- LIG B36, Arenales de Laida
- LIG B37, Marismas de Kanala
- LIG B38, Fangales de Murueta - Idokilis
- LIG B39, Ofitas de Sukarrieta
- LIG B40, Lumaquela de Mundaka
- LIG B41, Cabo de Ogoño
- LIG B42, Calizas de Ereño
- LIG B43, Valles cerrados de Basondo y Oma
- LIG B44, San Juan de Gaztelugatxe



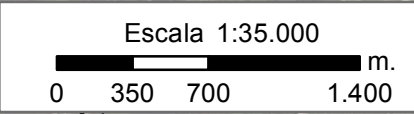
**GEOZONA GZ4- URDAIBAI**



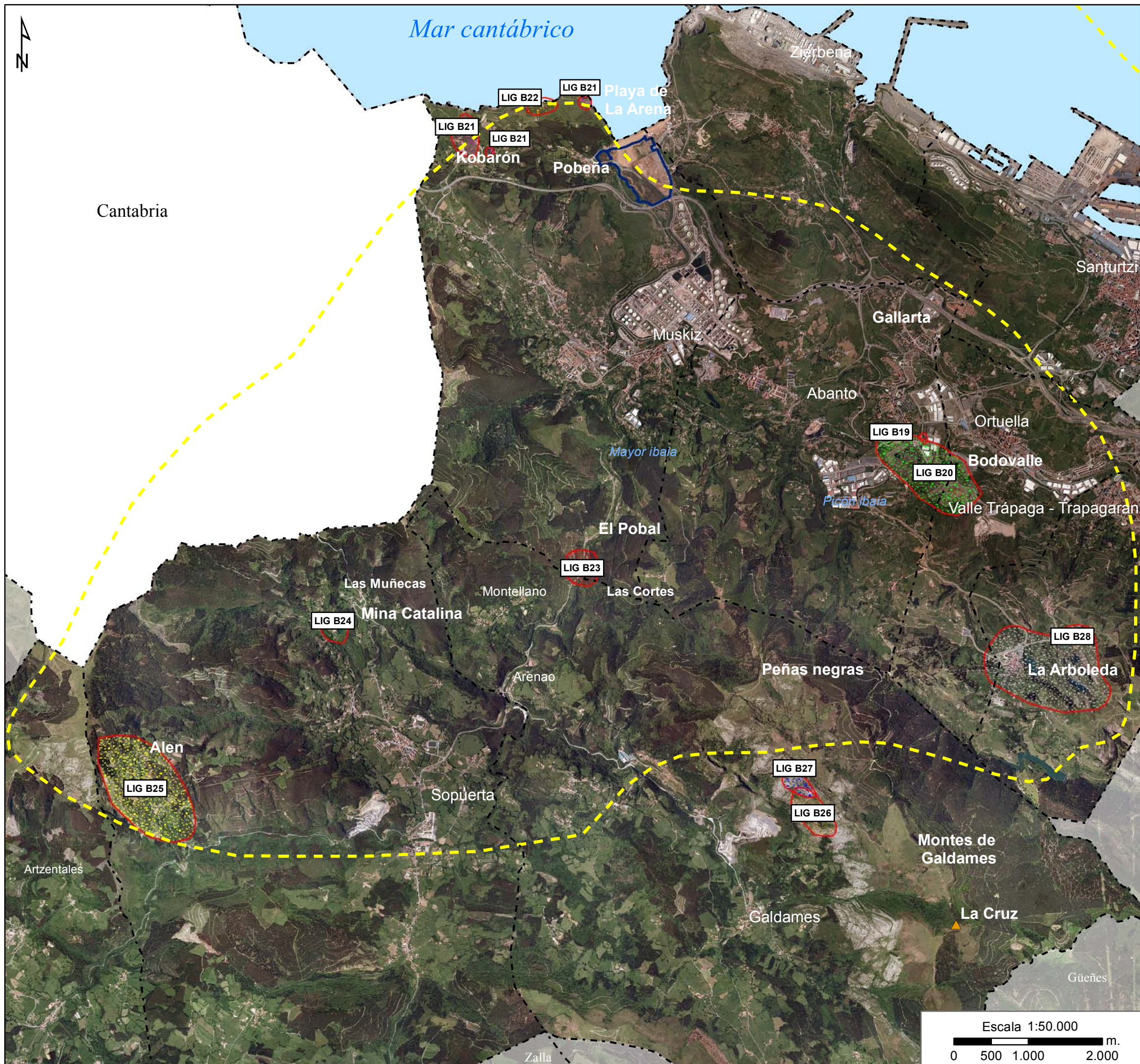
Mar cantábrico




- Red Natura 2000: LIC
- Límite municipal
- Geozonas
- LIG B1, Flysch del Castillito
- LIG B2, Dunas fosiles de Astondo
- LIG B3, Pliegues de Barrika
- LIG B4, Pillow lavas de Meñakoz
- LIG B5, Limite KT de Sopelana
- LIG B6, Playa de Azkorri
- LIG B7, Playas cementadas de La Galea
- LIG B8, Rasa fósil de La Galea
- LIG B9, Sinclinal de Bizkaia

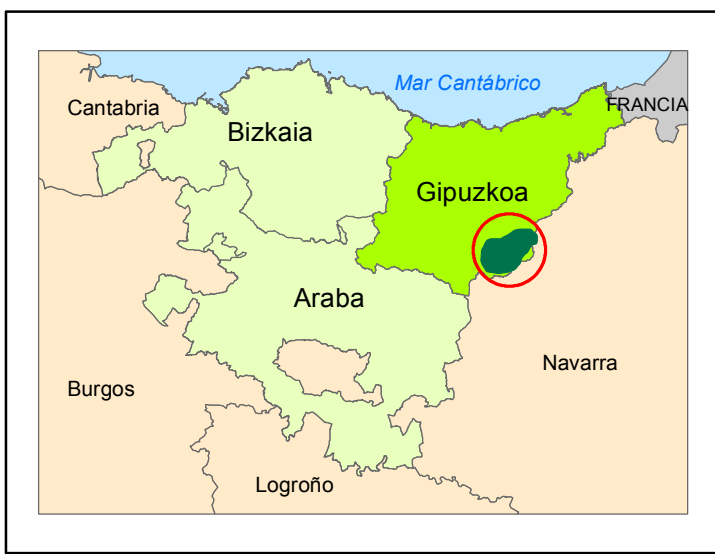
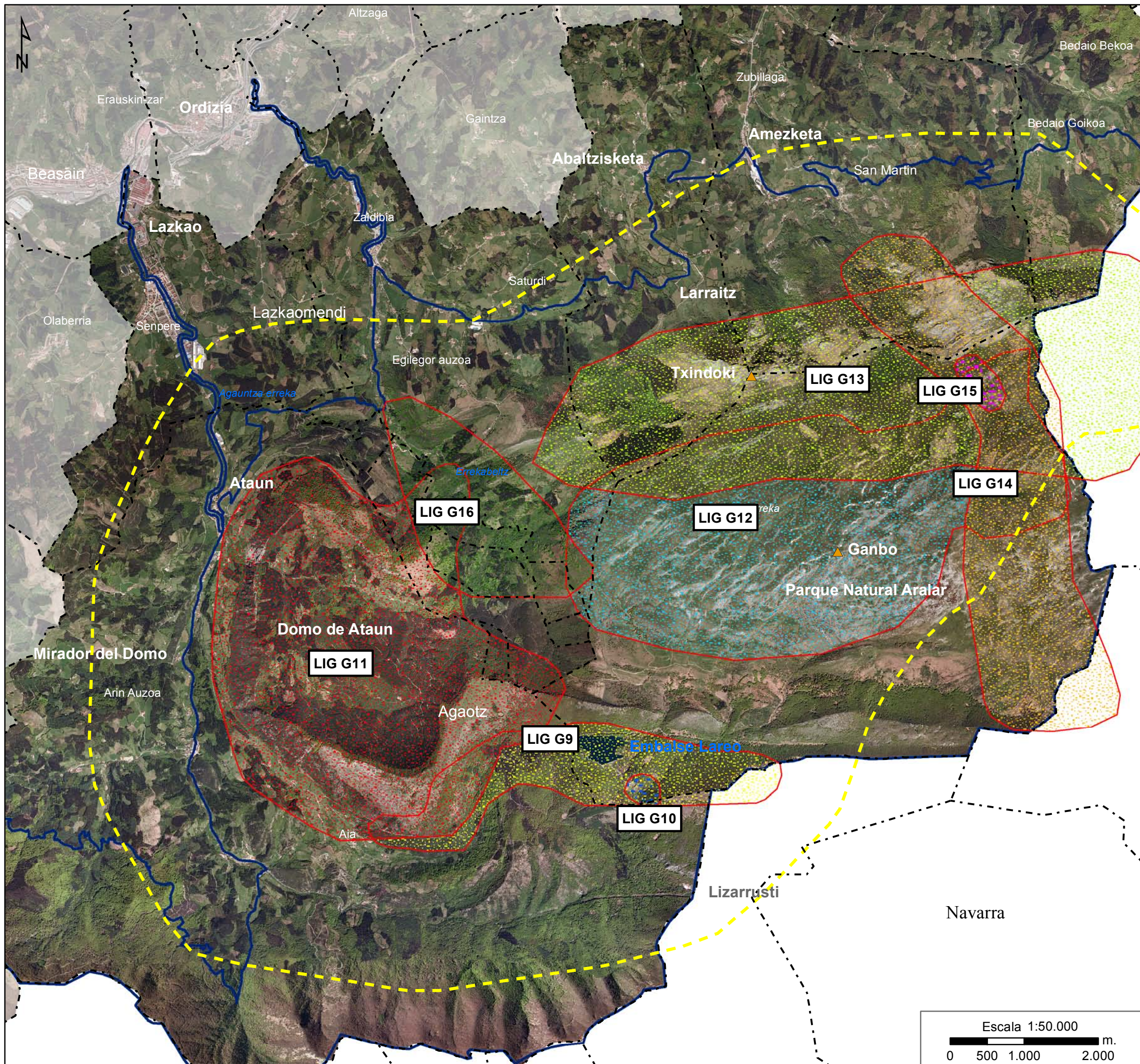


**GEOZONA GZ5- BARRIKA**

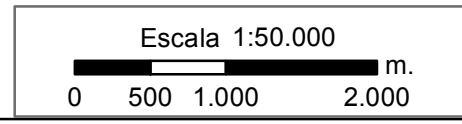


-  Red Natura 2000: LIC
-  Límite municipal
-  Geozonas
-  LIG B19, Museo de la minería
-  LIG B20, Mina Bodovalle
-  LIG B21, Minas y hornos de calcinacion de Kobaron
-  LIG B22, Pliegues de Itsasur
-  LIG B23, Ferreria El Pobal
-  LIG B24, Mina y hornos de Catalina
-  LIG B25, Minas de Alen
-  LIG B26, Karst Montes de Galdames
-  LIG B27, Filones de Hierro de Galdames
-  LIG B28, La Arboleda

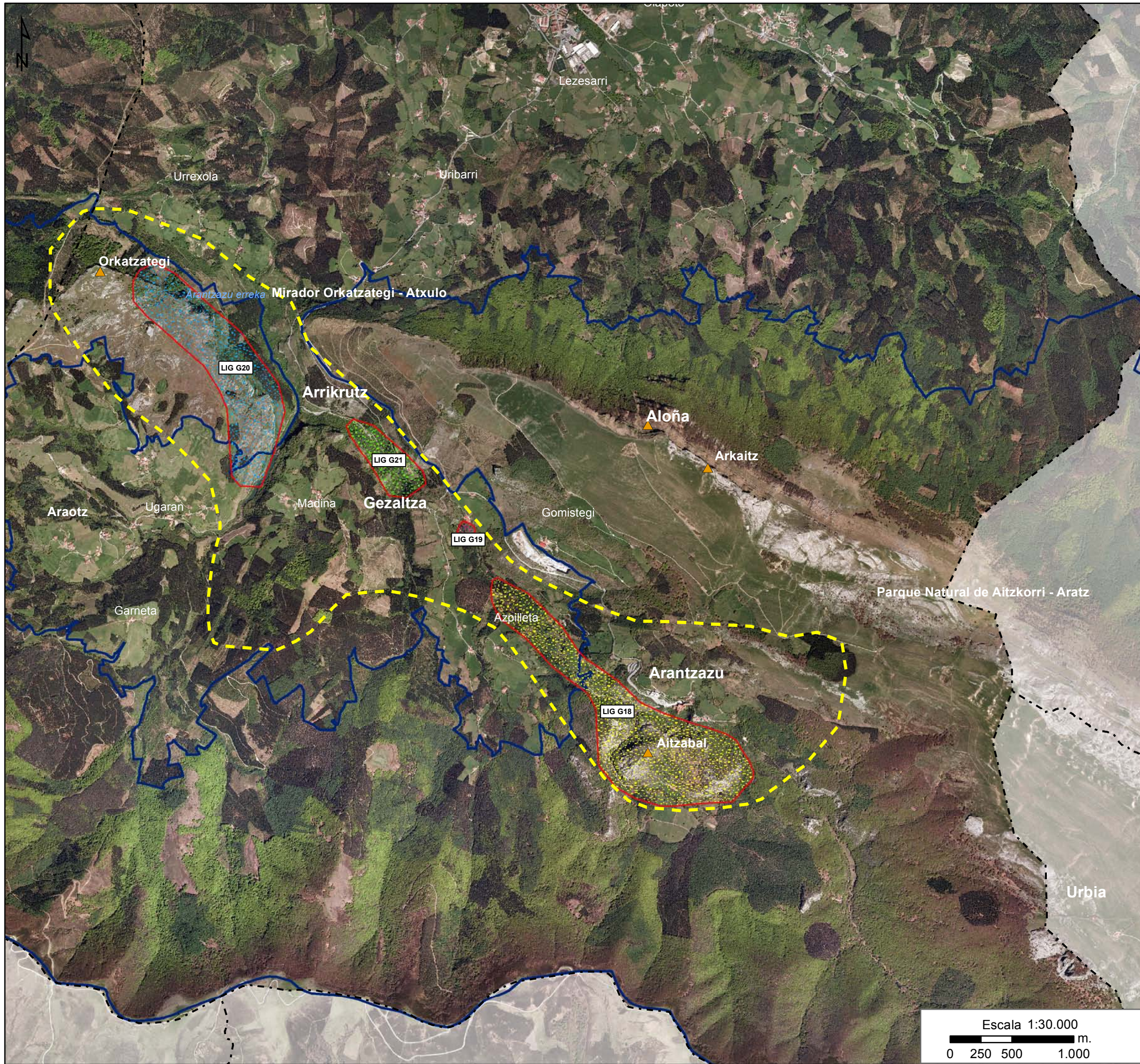
**GEOZONA GZ6-  
ZONA MINERA**



- Red Natura 2000: LIC
- Límite municipal
- Geozonas
- LIG G9, Hidrogeología de Lareo
- LIG G10, Espejo de falla de Lareo
- LIG G11, Domo y cantera de Ataun
- LIG G12, Jurasico de Aralar
- LIG G13, Frente N de Aralar
- LIG G14, Valle glaciar de Arritzaga
- LIG G15, Minas de Arritzaga
- LIG G16, Arkaka y surgencias de Osinbeltz



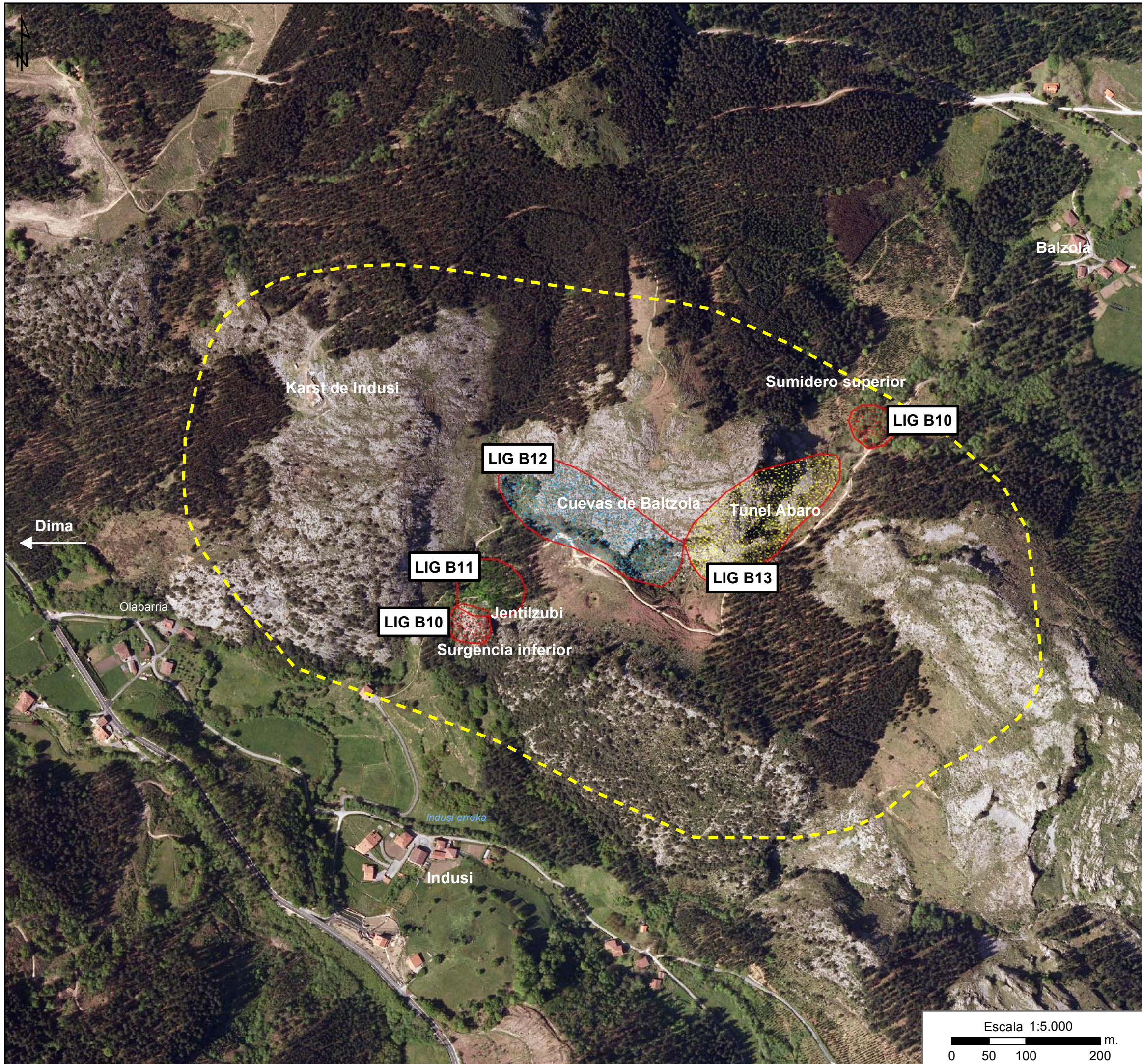
## GEOZONA GZ7- ARALAR



- Red Natura 2000: LIC
- Límite municipal
- Geozonas
- LIG G18, Cañon de Arantzazu
- LIG G19, Sumidero de Gezaltza
- LIG G20, Galerias fosiles de Orkatzategi - Atxulo
- LIG G21, Cueva de Arrikruz

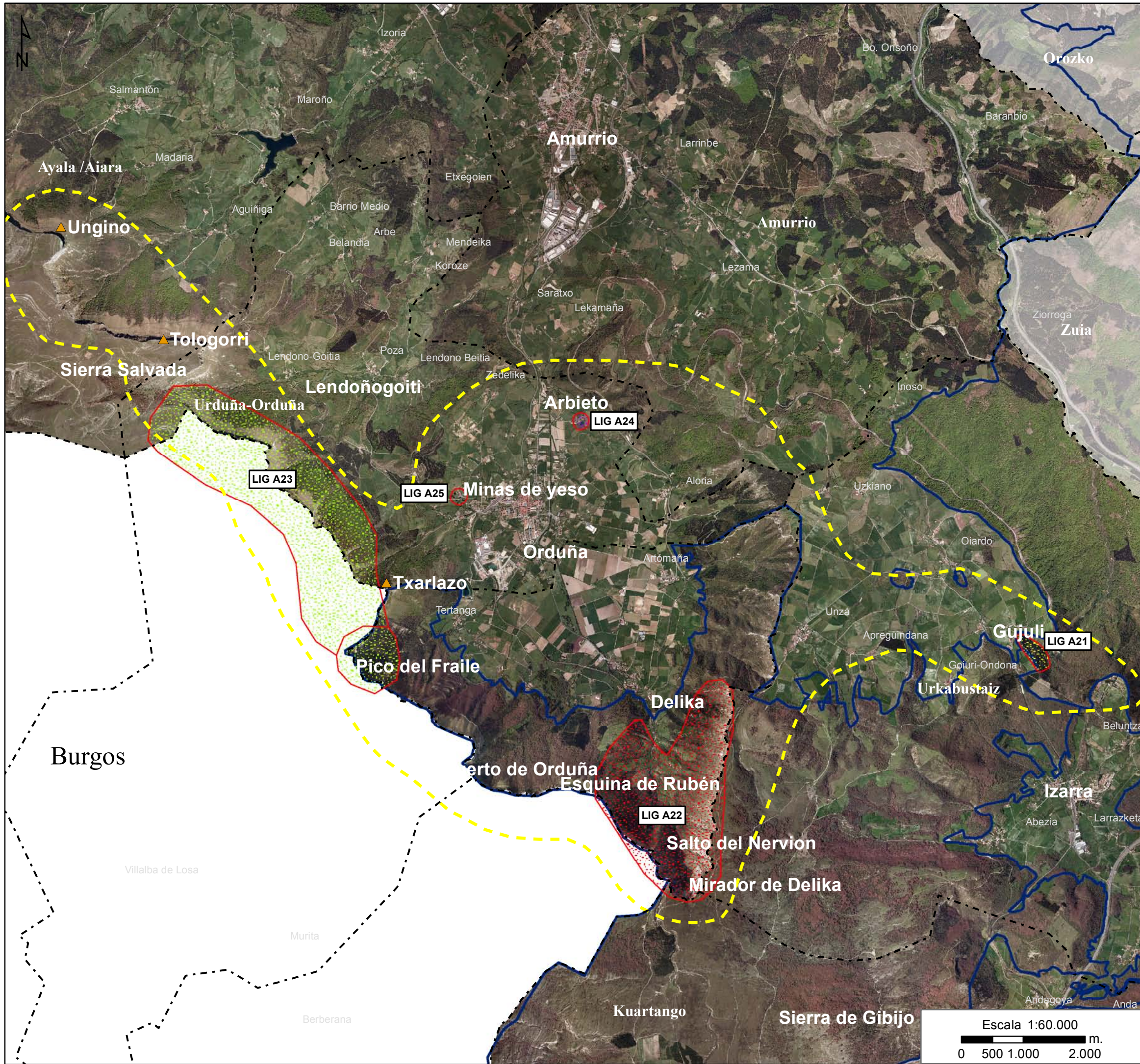
**GEOZONA GZ8-  
ARANTZAZU**





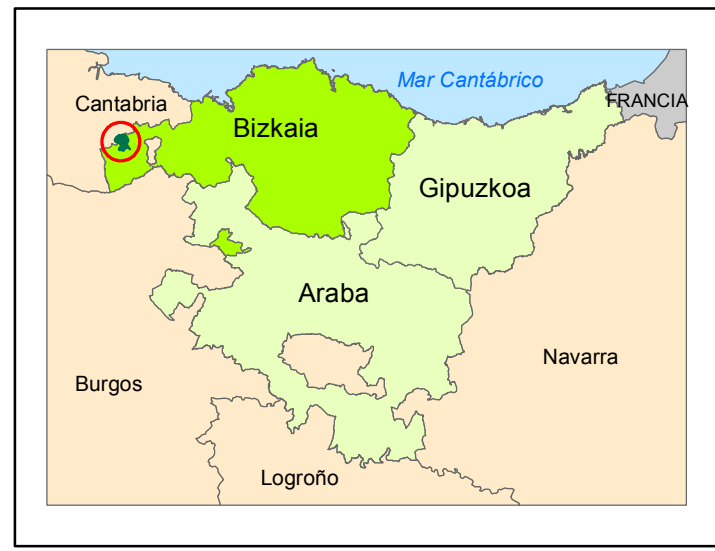
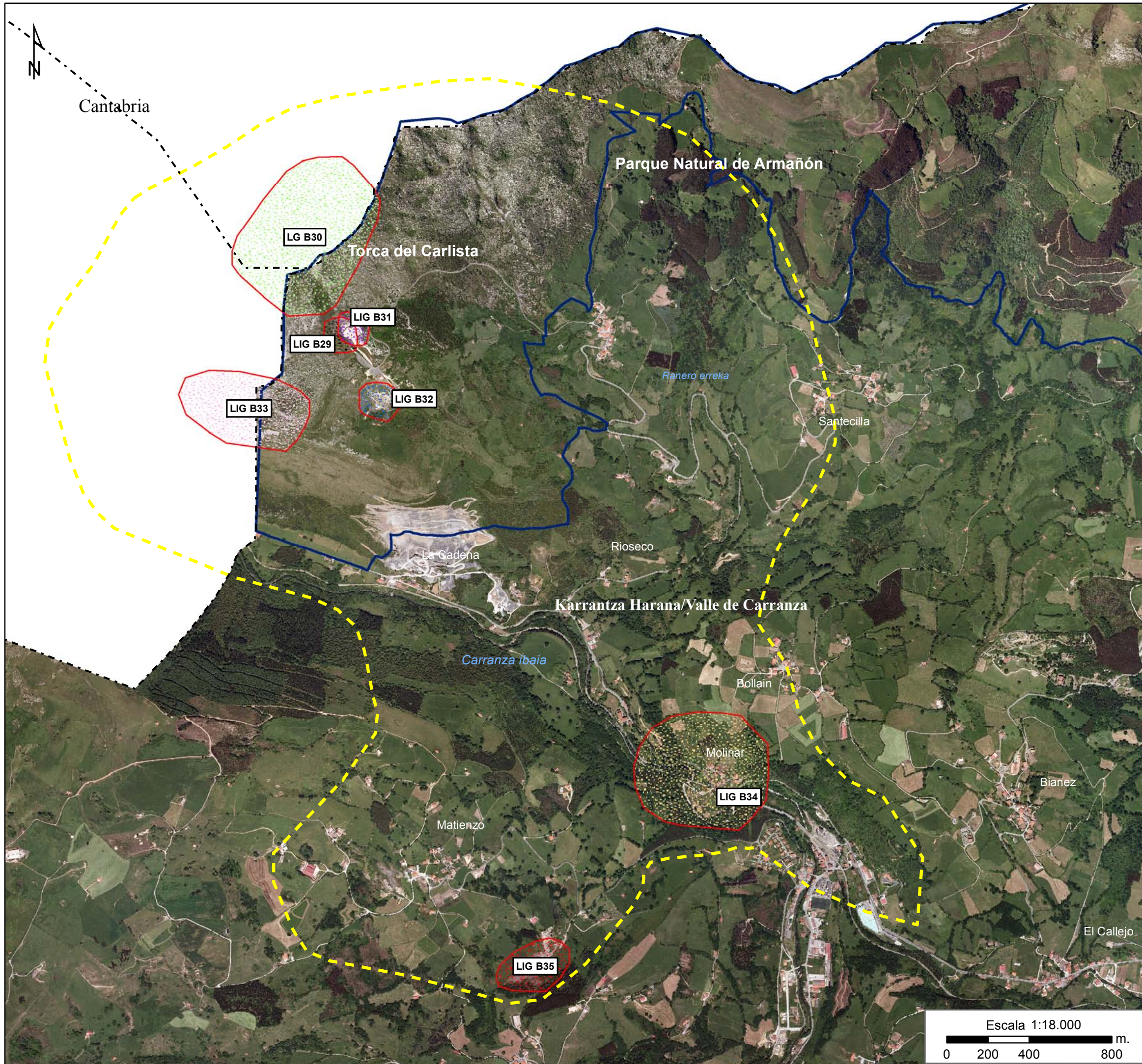
- Red Natura 2000: LIC
- Límite municipal
- Geozonas
- LIC B10, Sumideros y surgencias del karst de Indusi
- LIC B11, Jentilzubi
- LIC B12, Cueva de Baltzola
- LIC B13, Túnel de Abaro

GEOZONA GZ9- INDUSI

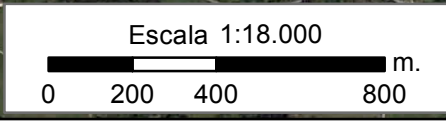


- Red Natura 2000: ZEPA
- Límite municipal
- Geozonas
- LIG A21, Cascada de Gujuli
- LIG A22, Cañon de Delika
- LIG A23, Pico del Fraile - Sierra Salvada
- LIG A24, Dolina de Arbieta
- LIG A25, Minas de yeso de Orduña

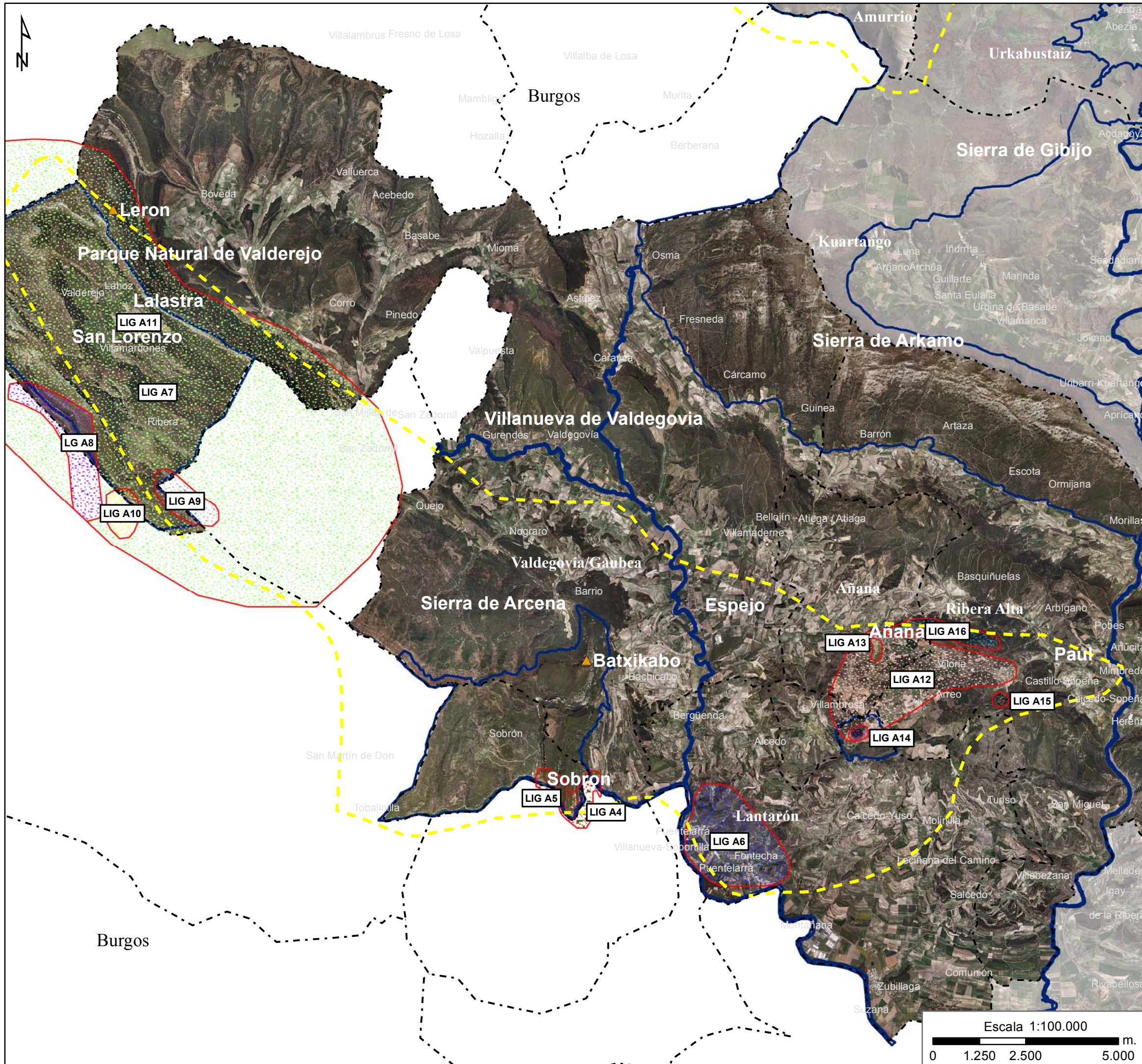
**GEOZONA GZ11-  
SIERRA SALVADA**







- Red Natura 2000: LIC
- Límite municipal
- Geozonas
- LIG B29, Cueva de Pozalagua
- LIG B30, Torca del Carlista
- LIG B31, Cantera de Dolomia de Ranero
- LIG B32, Carcavas de Ranero
- LIG B33, Cuevas de Ventalaperra
- LIG B34, Aguas termales de El Molinar
- LIG B35, Mina Angela

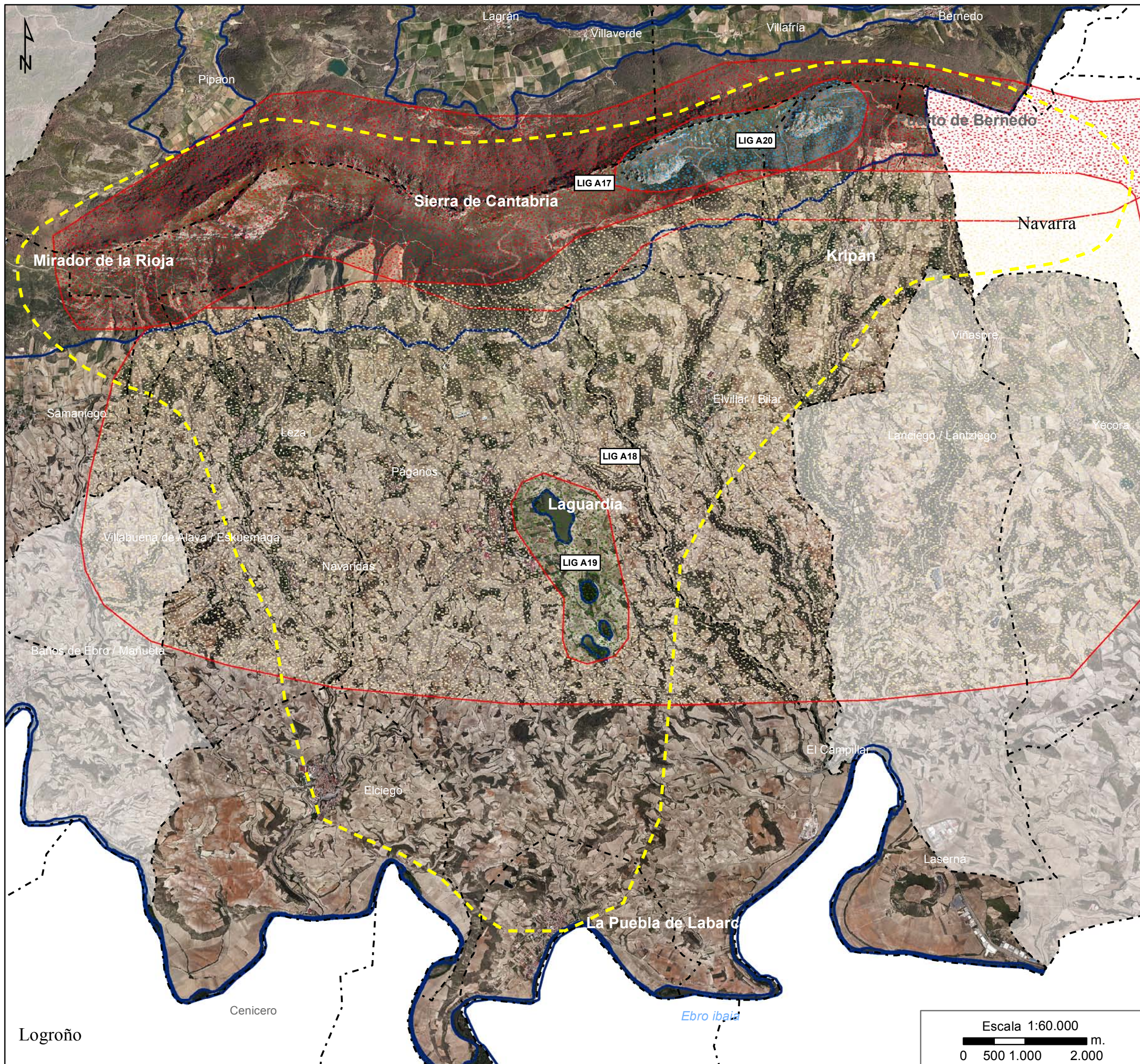


**GEOZONA GZ12-  
CARRANZA**

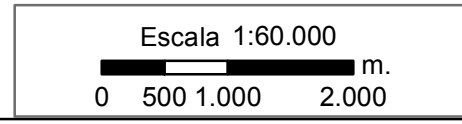


-  Red Natura 2000: LIC
-  Límite municipal
-  Geozonas
-  LIG A4, Cañon de Sobron
-  LIG A5, Hidrogeología de Sobron
-  LIG A6, Terrazas fluviales del Ebro
-  LIG A7, Anticlinal de Valderejo
-  LIG A8, Hidrogeología del río Puron
-  LIG A9, Terrazas del río Puron
-  LIG A10, Desfiladero del río Puron
-  LIG A11, Parketxe de Valderejo
-  LIG A12, Diapiro de Añana
-  LIG A13, Salinas de Añana
-  LIG A14, Lago de Arreo
-  LIG A15, Minas de Yeso de Paul
-  LIG A16, Conglomerados oligocenos de Añana

**GEOZONA GZ14-  
VALDEGOVIA**



- Red Natura 2000: LIC
- Límite municipal
- Geozonas
- LIG A17, Frente sierra de Cantabria
- LIG A18, Terciario del Ebro
- LIG A19, Lagunas de Laguardia
- LIG A20, Conglomerados de Cripan



GEOZONA GZ15-  
SIERRA DE CANTABRIA