



Nola lortu obraren kokalekuaren GeoEuskadi irudia, lurzoruen geruza erakutsita

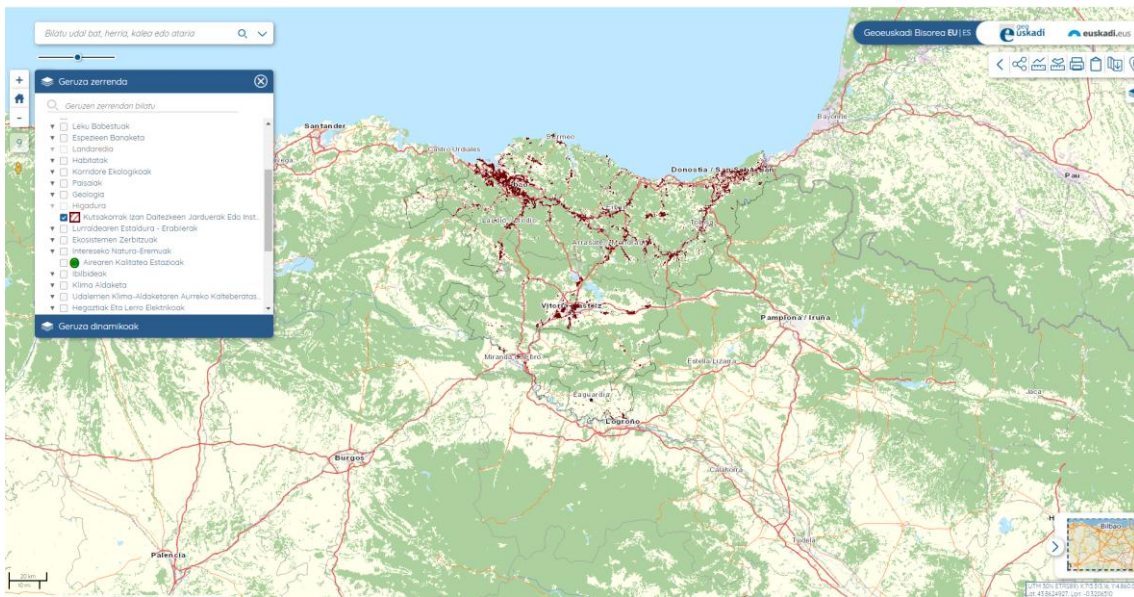
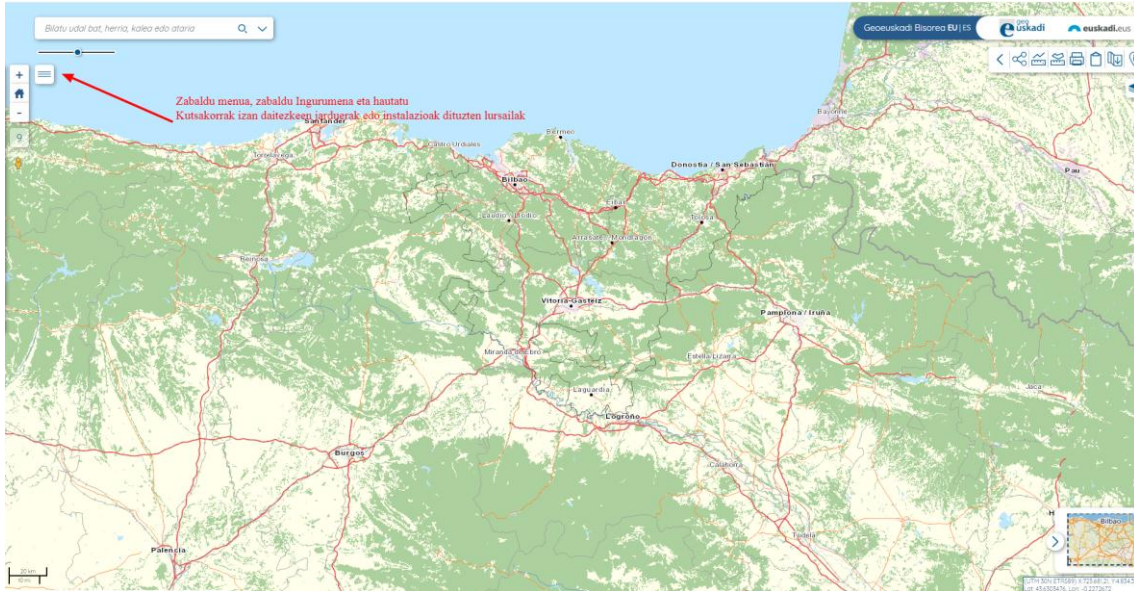
Pausoak

1. Sartu GeoEuskadi bisorean 1
2. Hautatu geruza 1
3. Hautatu kokalekua 2
 - a) Bilaketa-eremua erabilita 2
 - b) Kale-izendegia erabilita 3
4. Deskargatu irudi georreferentziatua 5

1. Sartu GeoEuskadi bisorean

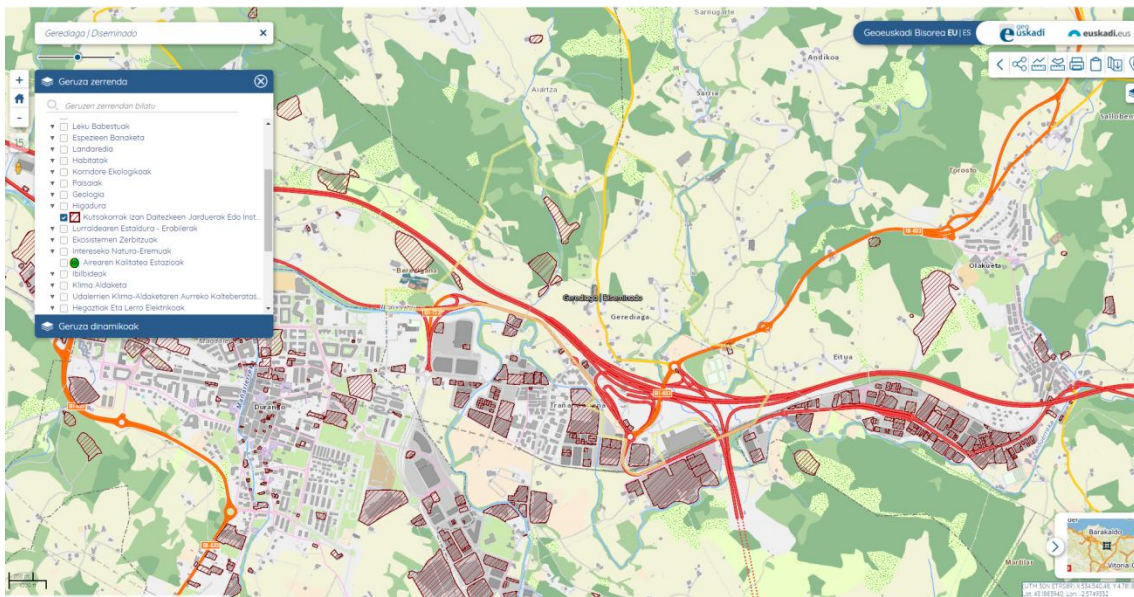
<http://www.geo.euskadi.eus/s69-bisorea/eu/x72aGeoEuskadiWAR/index.jsp>

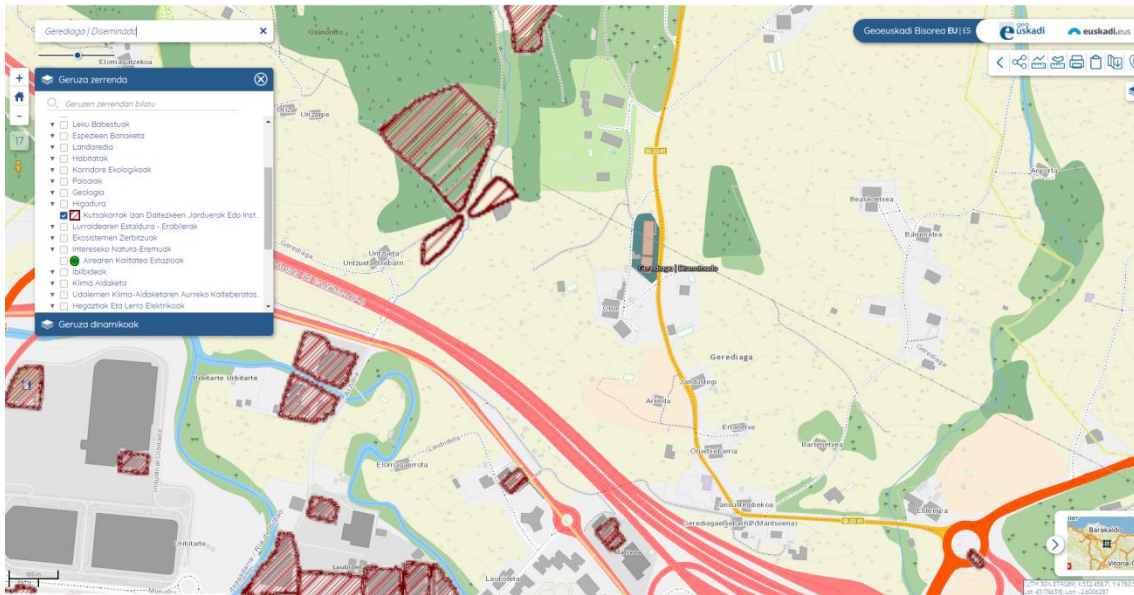
2. Hautatu geruza



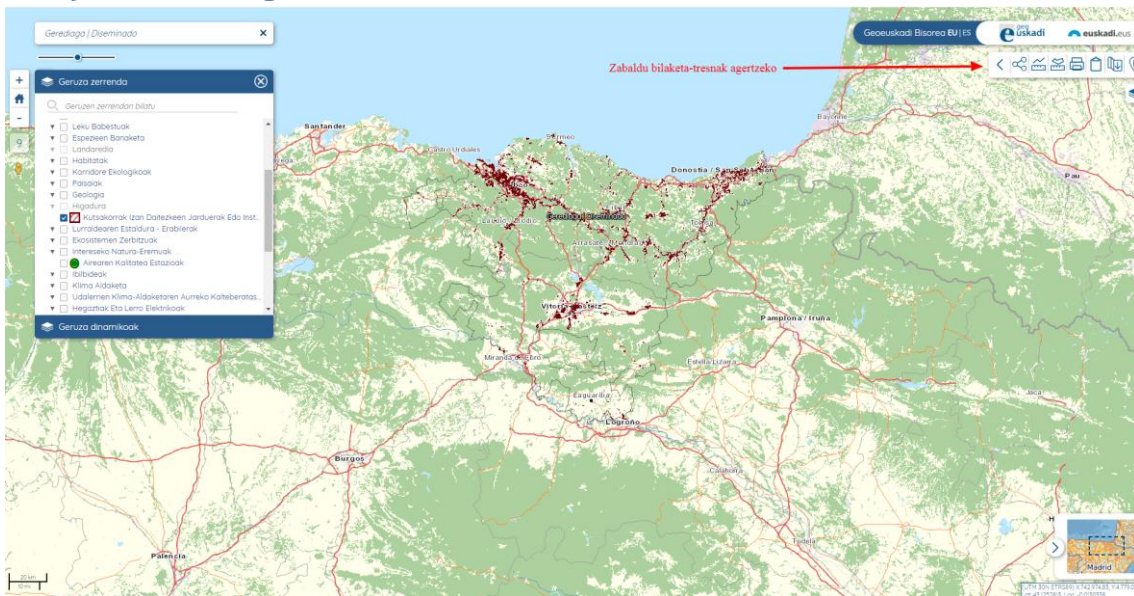
3. Hautatu kokalekua

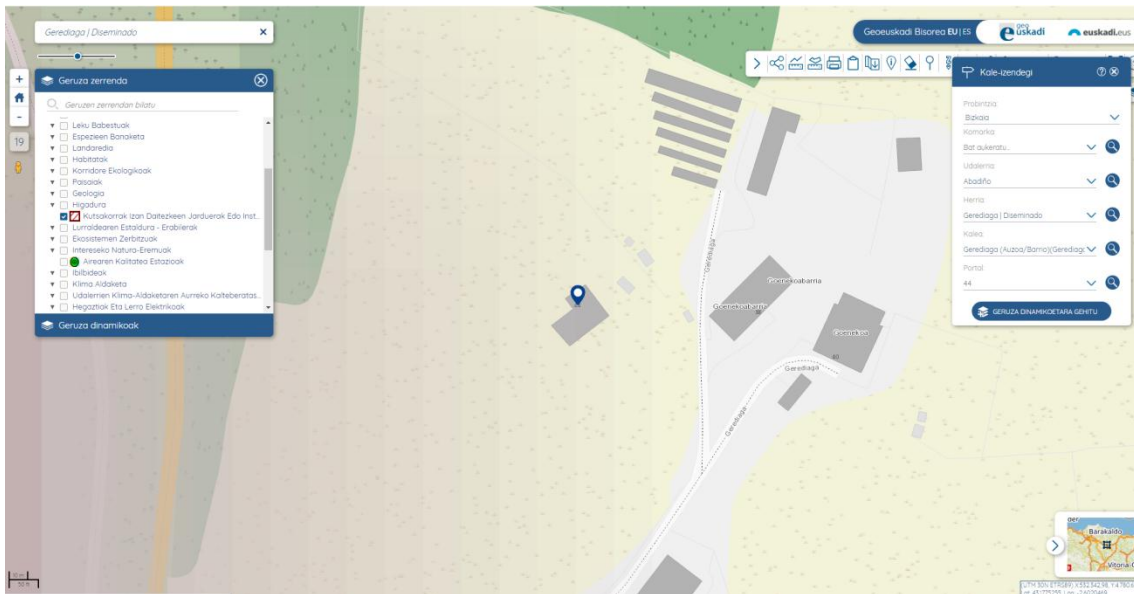
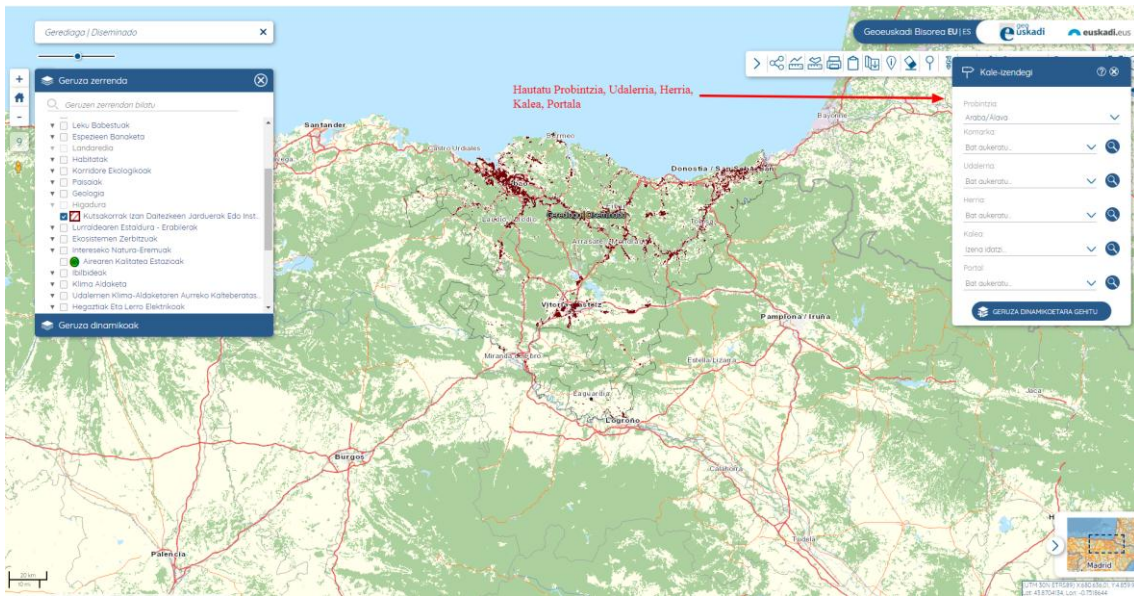
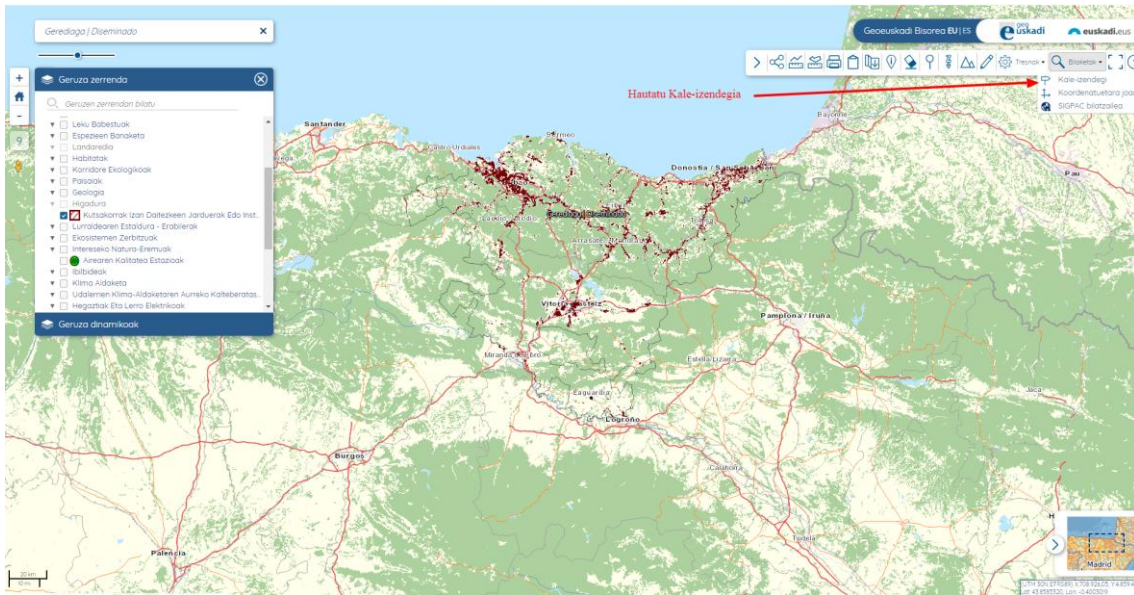
a) Bilaketa-eremua erabilita



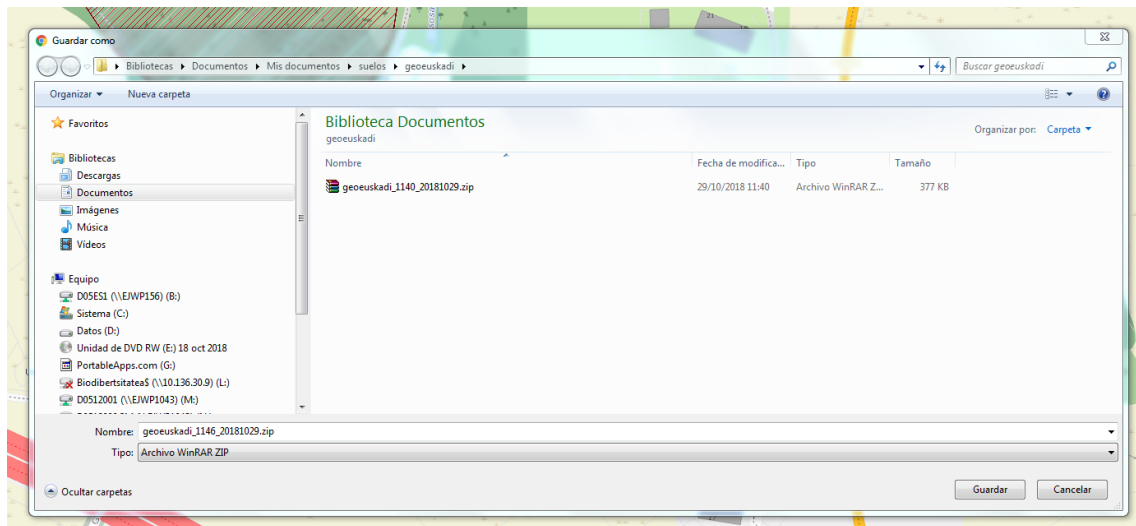
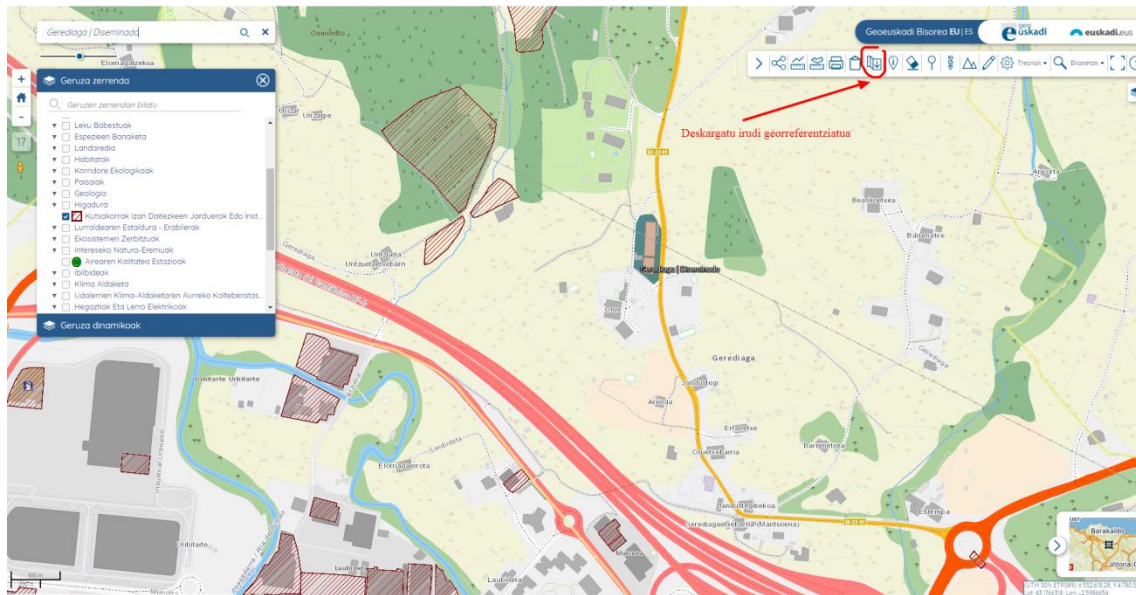


b) Kale-izendegia erabilia





4. Deskargatu irudi georreferentziatua



Gorde sortutako zipa.